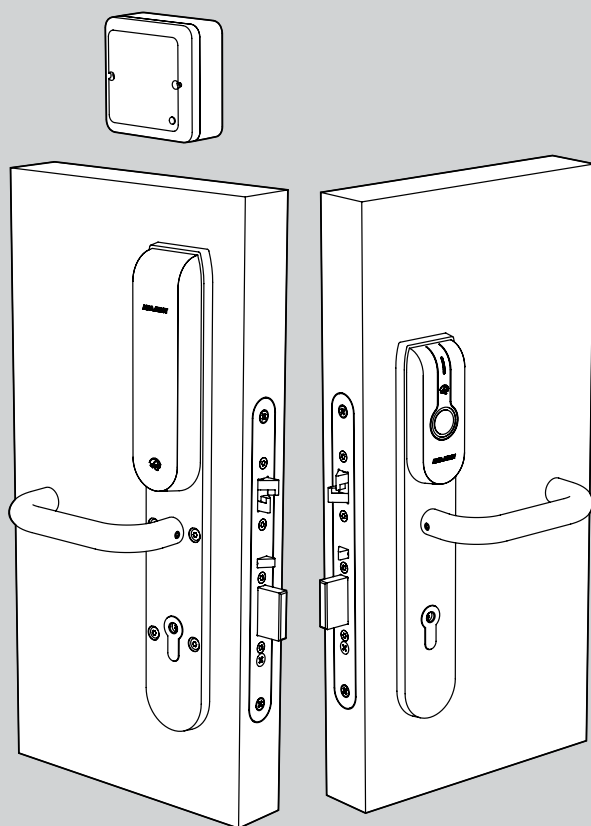


Installation AL560 / AL460

ASSA ABLOY

ASSA ABLOY, the global leader in
door opening solutions

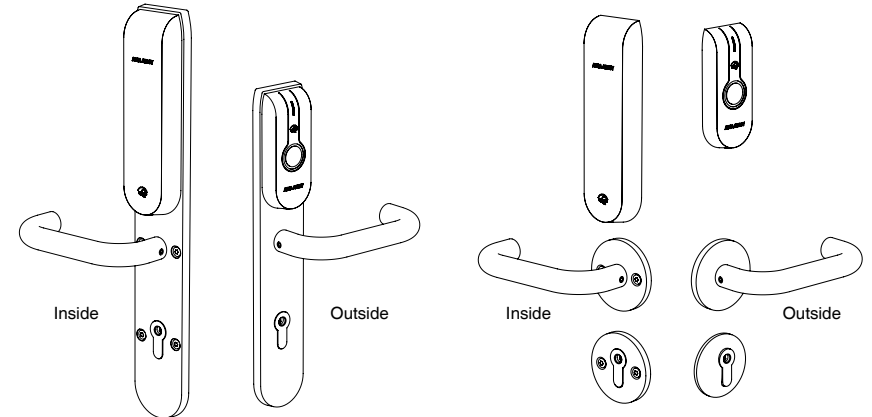


Contents

TECHNICAL DATA	3
LED INDICATIONS	4
DRILLING SCHEME (AL560, AL561)	5
INSTALLATION, READER (A - E)	6 - 8
INSTALLATION, LOCK (F)	9
CHANGING BATTERIES (G)	10 - 11
TECHNICAL DATA AL560, AL561	12
SPINDLE	13
STANDARDS	13
EMERGENCY EXIT DEVICES INSTALLATION	
ACCORDING TO EN 179	14
PANIC EXIT DEVICES INSTALLATION	
ACCORDING TO EN 1125	14
DRILLING SCHEME STRIKE PLATES	15
DRILLING	17
SETTABLE FUNCTIONS OF 560, AL561	
CHANGING THE FOREND (H)	20
REMOVING THE MANIPULATION	
PROTECTION COVER (I)	22
SETTING THE EXIT HANDLE SIDE (AL560) (J)	23
CHANGING THE HANDING OF	
THE TRIGGER BOLT (K)	23
SETTING 8/9 SNAP SPINDLE ADAPTERS (L)	23

TECHNICAL DATA

Battery type:	2 pieces Energizer lithium AA size, L91, FR6, 1,5V
Battery Lifetime:	Max. 50000 cycles
	Emergency battery KIT contact in reader
Encryption (radio communication):	AES 128 Bit, site related encryption key
Radio Standard:	IEEE 802.15.4 (2,4 GHz)
Distance between lock and HUB:	AH15 max. r=15m
	AH20 and AH30 max. 60m
	(Line of sight, no radio disturbance)
RFID reading:	UID, Sector, Blocks, Pages
RFID technology:	Mifare classic, Mifare +, DesFire, iClass, EM prox, HID Prox
Card reading distance:	<1cm
Environment:	Inside: 0°C - +40 °C humidity <85%
	Outside: -40°C - +65 °C humidity <85%
Altitude:	1 - 2000 m
IP-degree inside unit:	IP44
IP-degree outside unit:	IP54
Colour / surface:	Black/Plastic
Override:	Up to 10 override credentials / cards
	Mechanical cylinder
Monitoring:	Locking status (unlocked / locked)
	Key cylinder status (key used / key not used)
	Handle status (handle used / handle not used)
	Door monitor status / trigger bolt (door open / not open)
	Tamper / sabotage

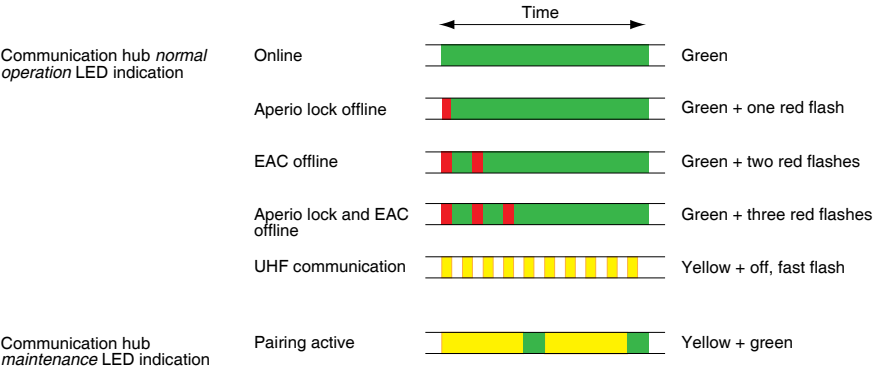


LED INDICATION

COMMUNICATION HUB LED INDICATION

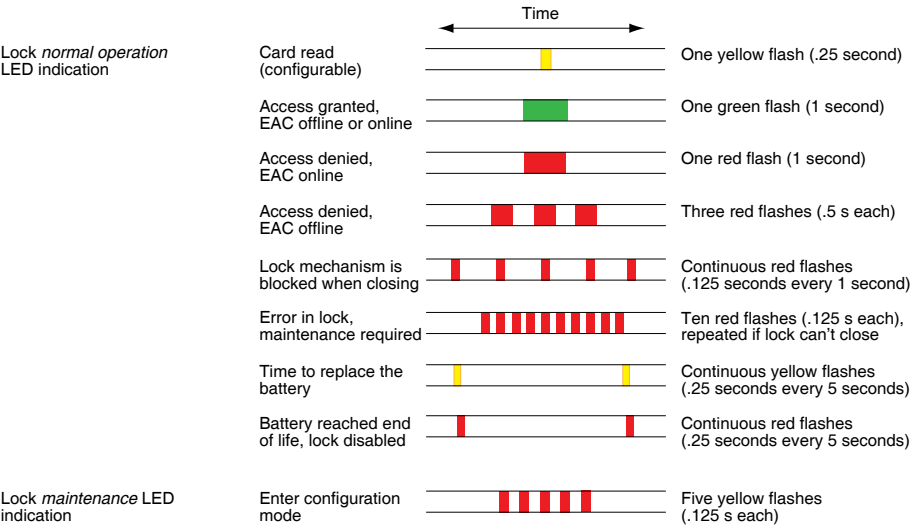
The communication hub has a single LED. It supports an optical scheme with red, green and yellow.

The indication scheme is described by the two figures below:



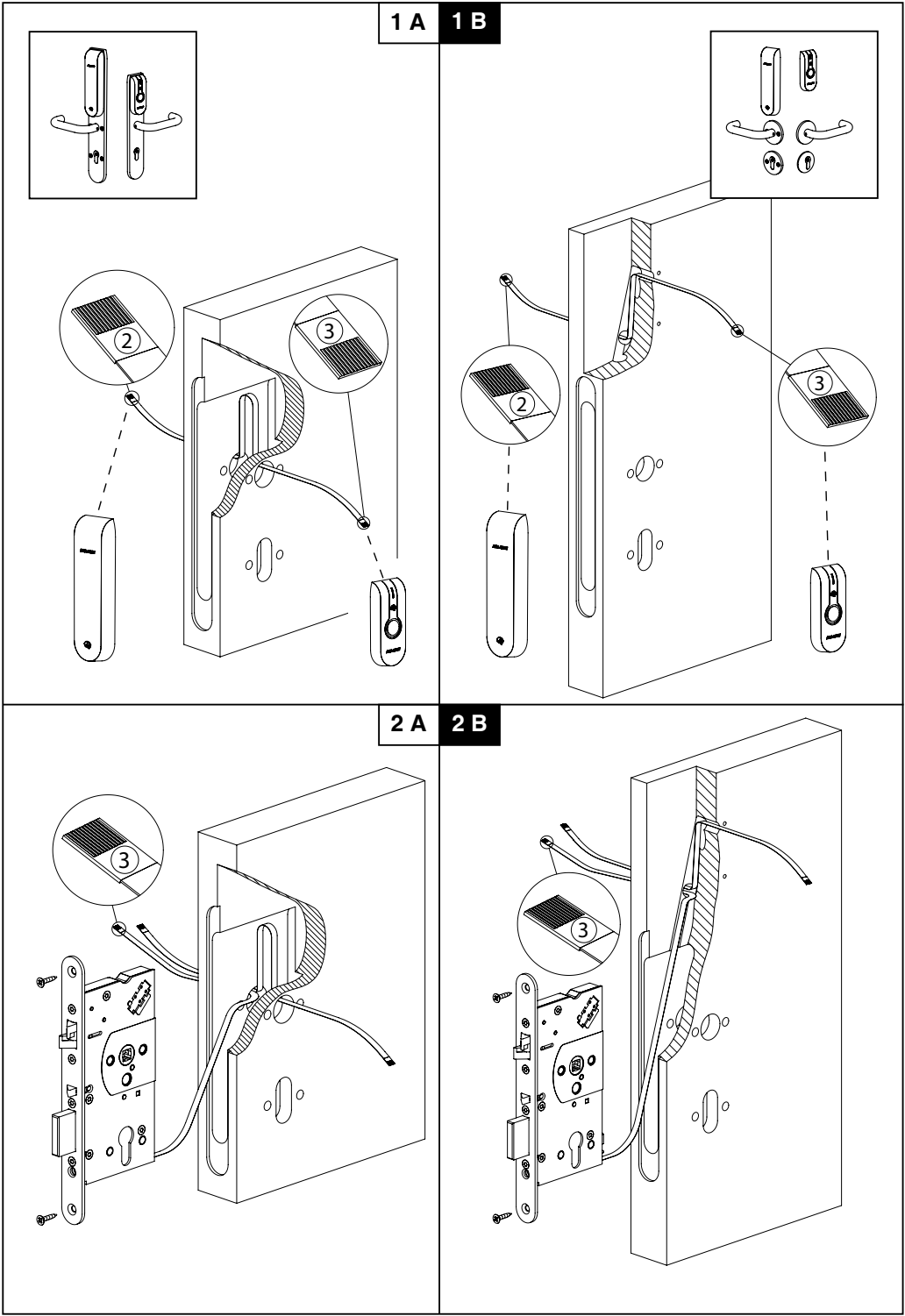
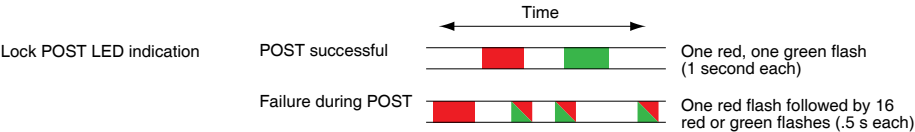
LOCK NORMAL OPERATION LED INDICATION

The lock has three LEDs. They support an optical scheme with red, yellow and green. The indication scheme is described by the figures below:

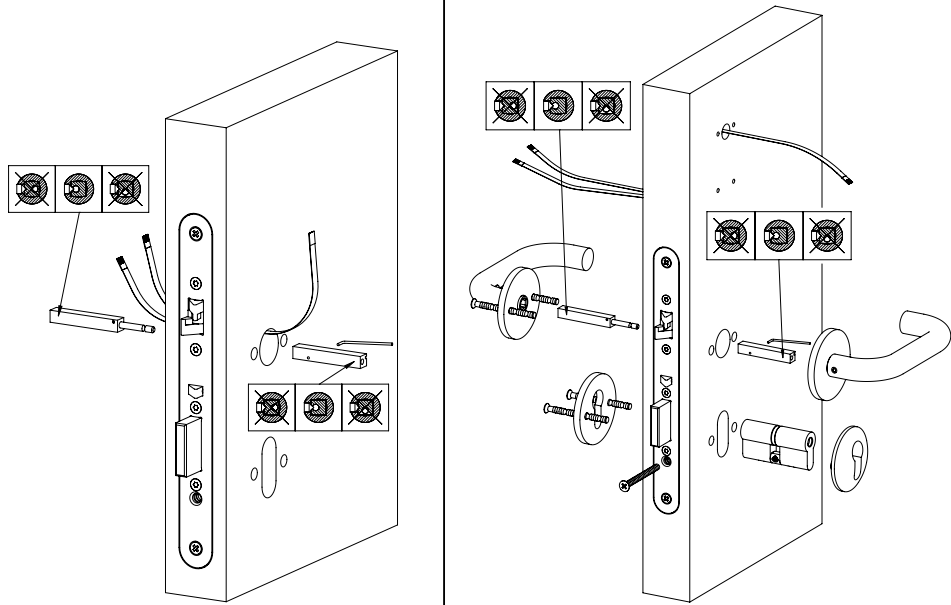


LOCK SELF TEST LED INDICATION

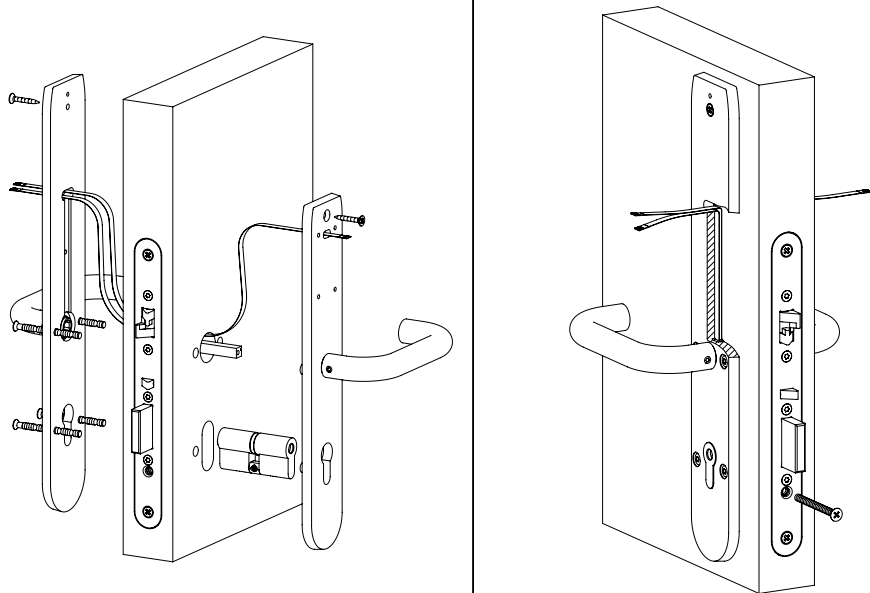
After replacing the battery, a Power On Self Test (POST) is performed. The result is indicated using a series of red and green led flashes as is described by the Figure below:



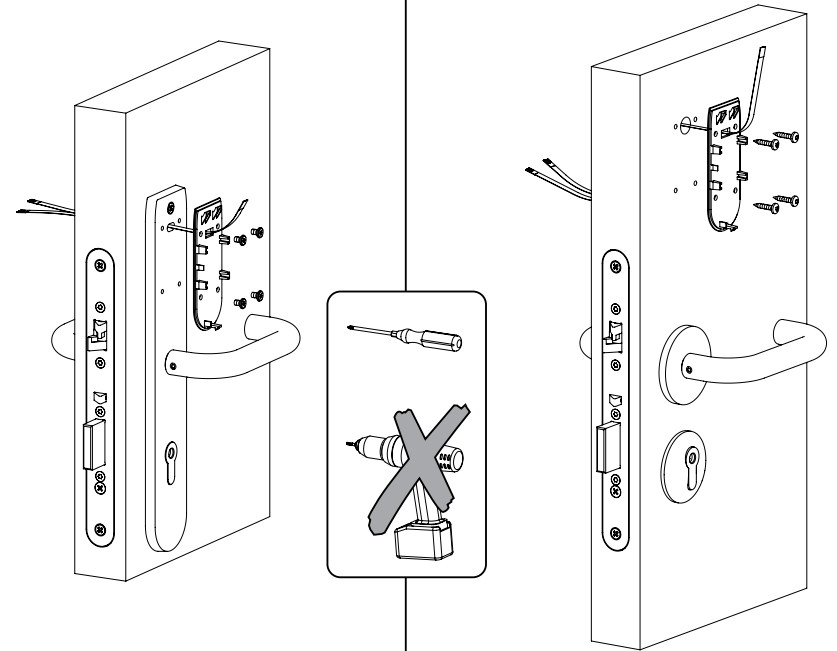
3 A 3 B



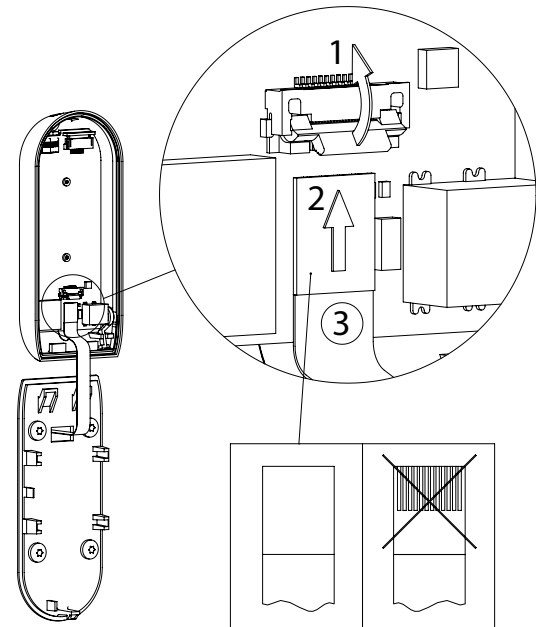
4 A 5 A



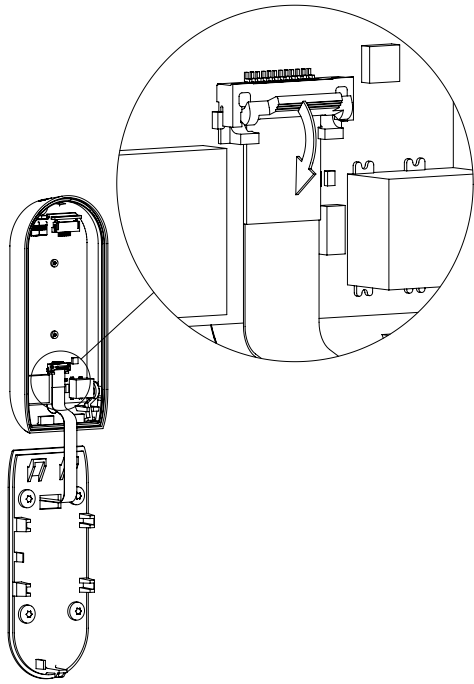
6 A 4 B



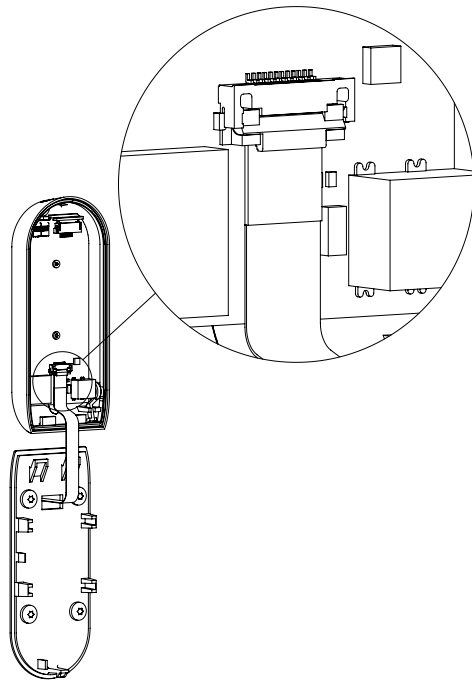
7 A + 5 B



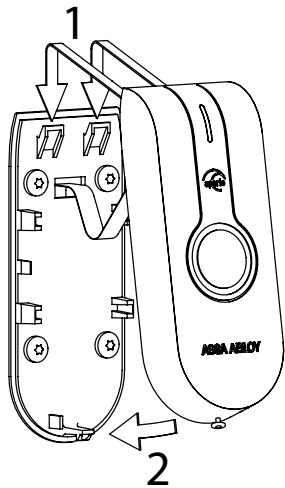
8 A + 6 B



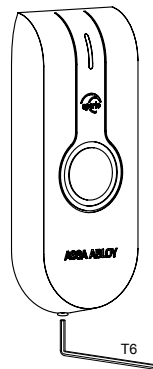
9 A + 7 B



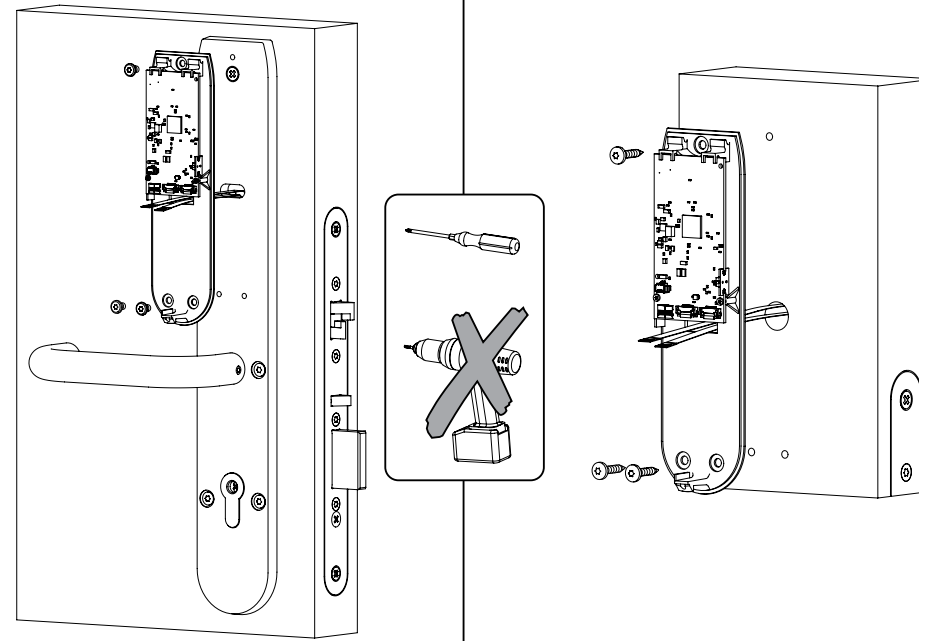
10 A + 8 B



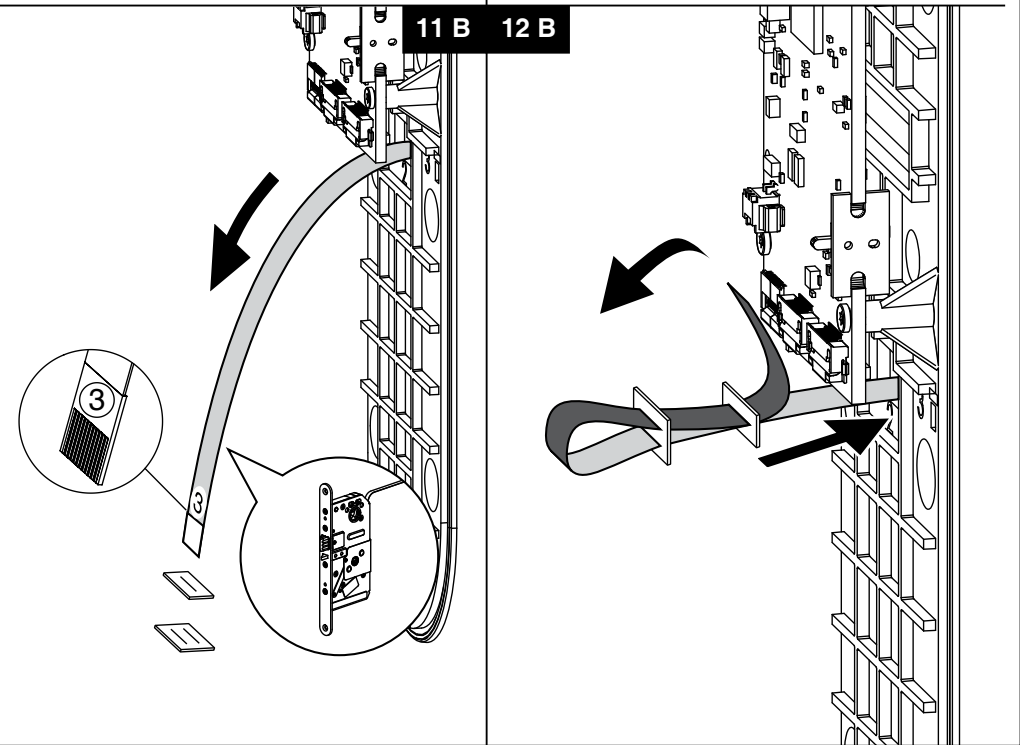
11 A + 9 B

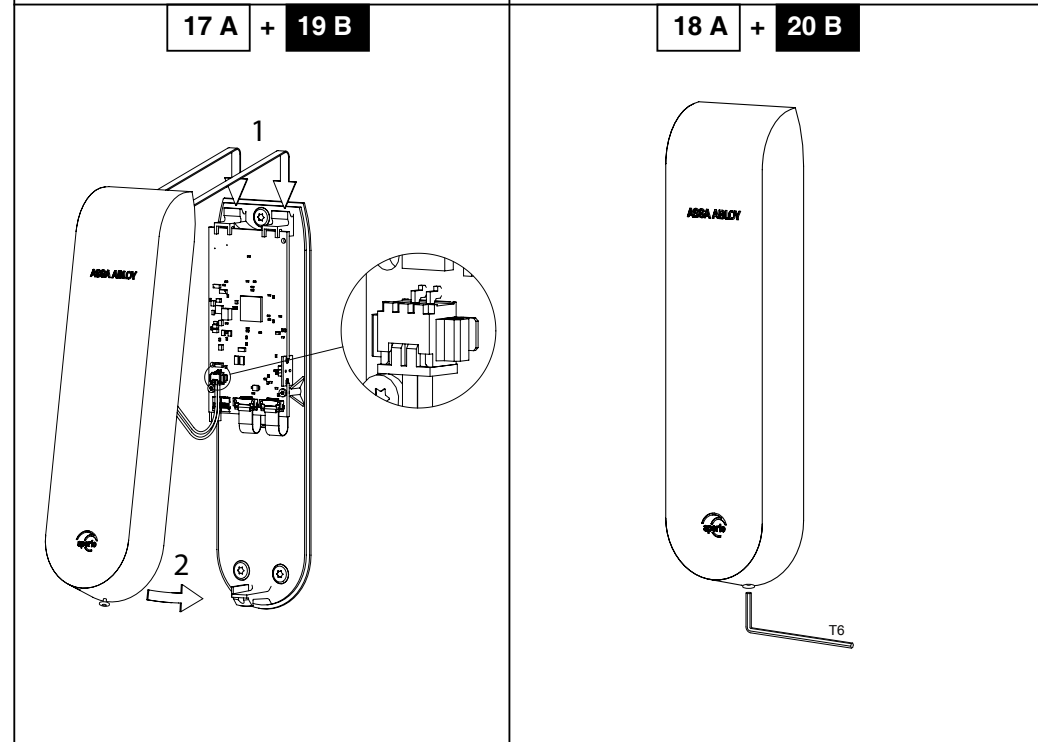
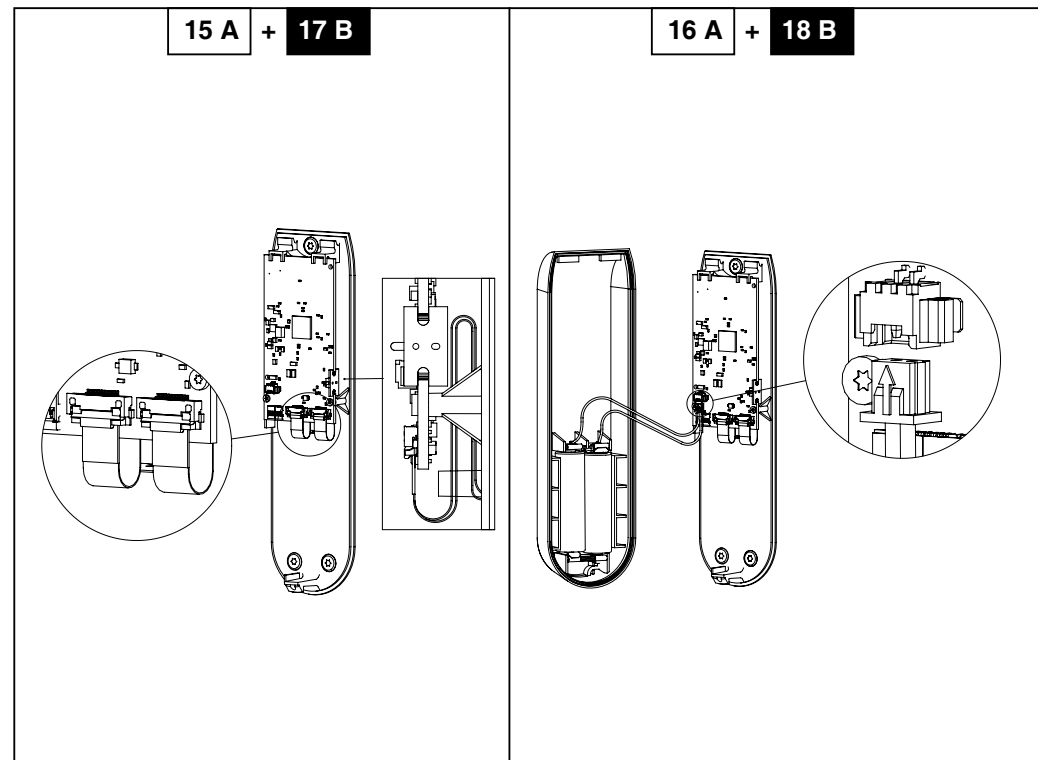
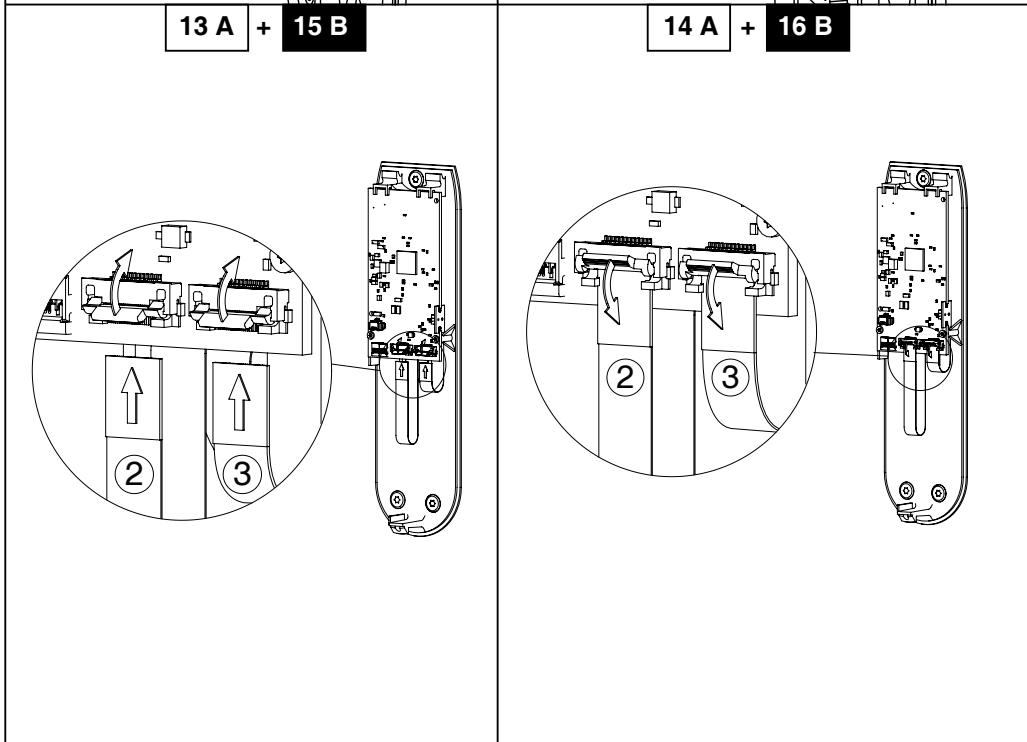
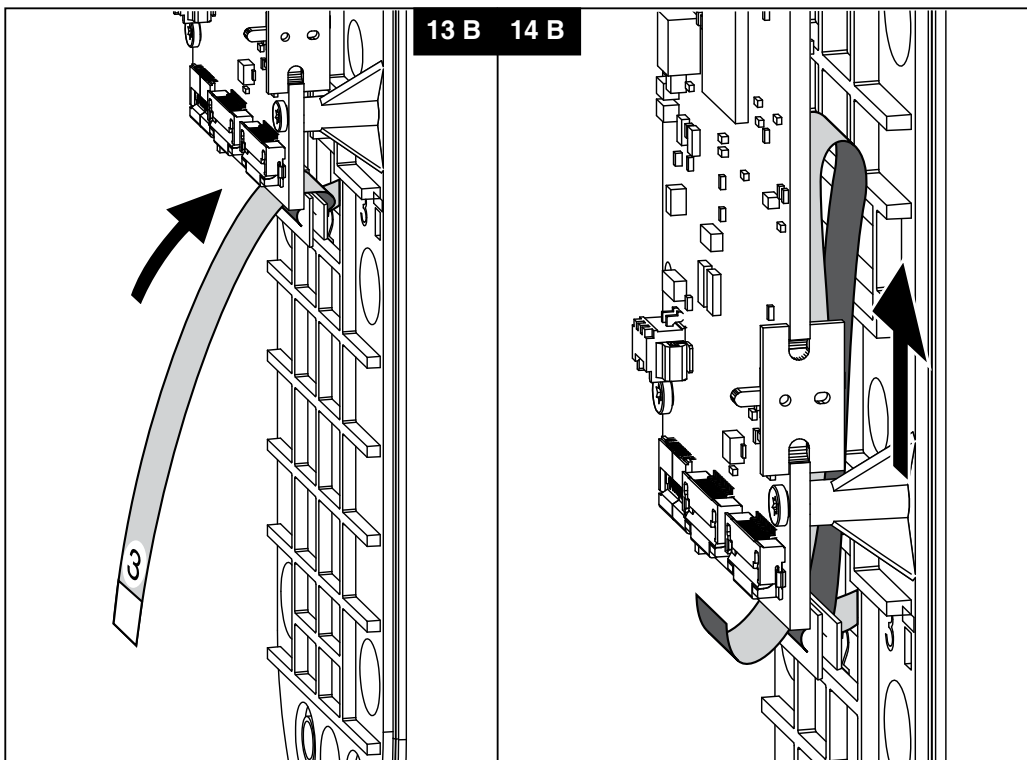


12 A 10 B

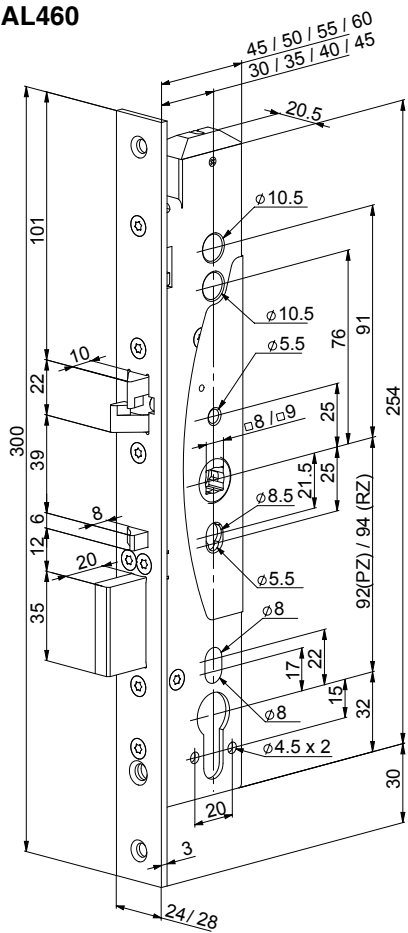


11 B 12 B

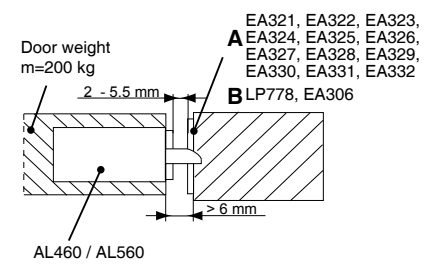
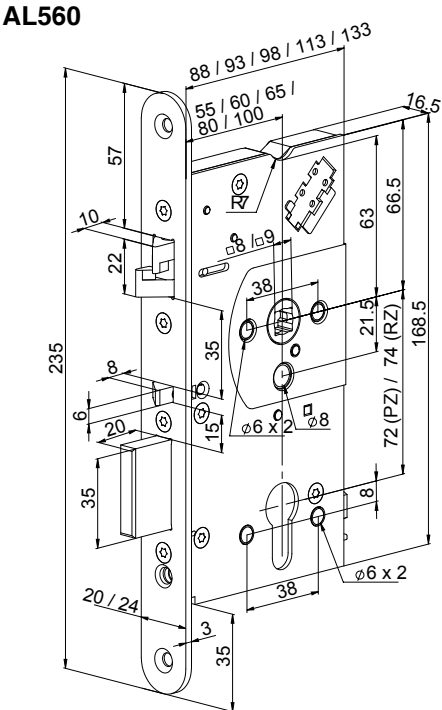




AL460

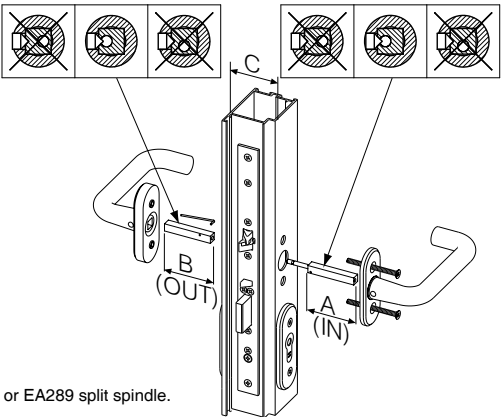


AL560

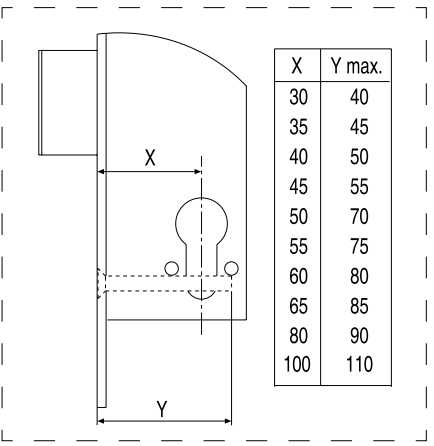
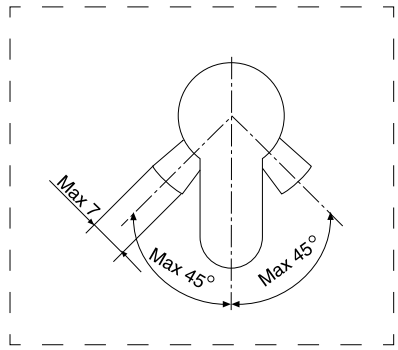


C	A(IN)	B(OUT)	□	
40 - 54 mm	47 mm	50 mm	8 mm	EA288 001000
47 - 66 mm	57 mm	50 mm	8 mm	EA288 002000
61 - 80 mm	67 mm	60 mm	8 mm	EA288 003000
66 - 80 mm	74 mm	50 mm	8 mm	EA288 004000
88 mm -	120 mm	120 mm	8 mm	EA288 005000
70 - 87 mm	90 mm	50 mm	8 mm	EA288 006000
C	A(IN)	B(OUT)	□	
40 - 54 mm	47 mm	50 mm	9 mm	EA289 001000
47 - 66 mm	57 mm	50 mm	9 mm	EA289 002000
61 - 80 mm	67 mm	60 mm	9 mm	EA289 003000
66 - 80 mm	74 mm	50 mm	9 mm	EA289 004000

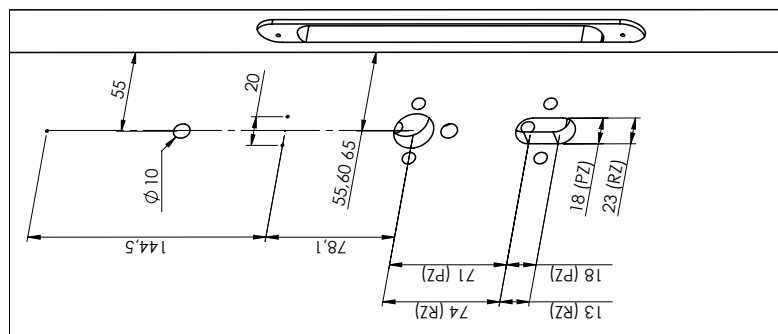
To ensure functionality of the lock case, use ABLOY® EA288 or EA289 split spindle.



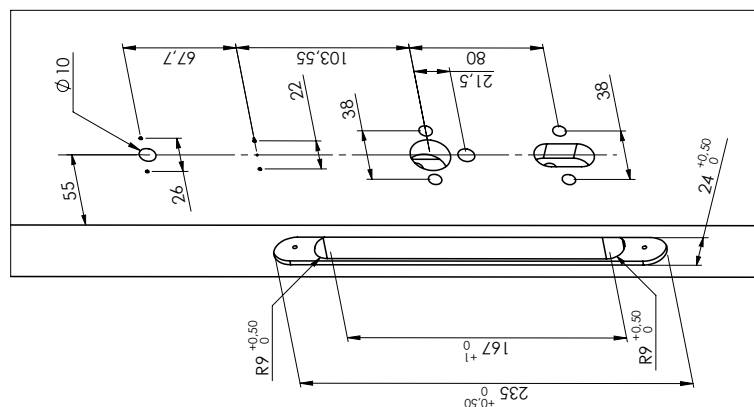
EN 179: 2008	3 7 6 B 1 3 4 2 A B	Exit
EN 1125: 2008	3 7 6 B 1 3 2 1 A B	Panic exit
EN 61000-6-1: 2007		EMC
EN 61000-6-3: 2007		EMC
EN 12209: 2004		Mechanical strength



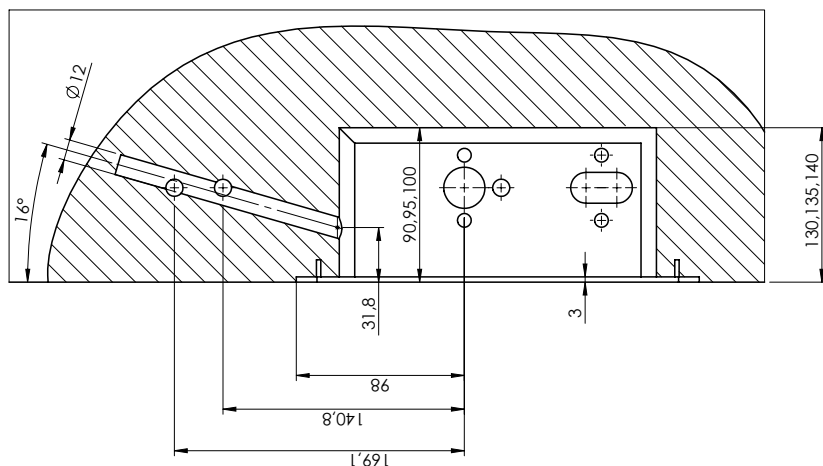
DRILLING SCHEME AL560



INSIDE

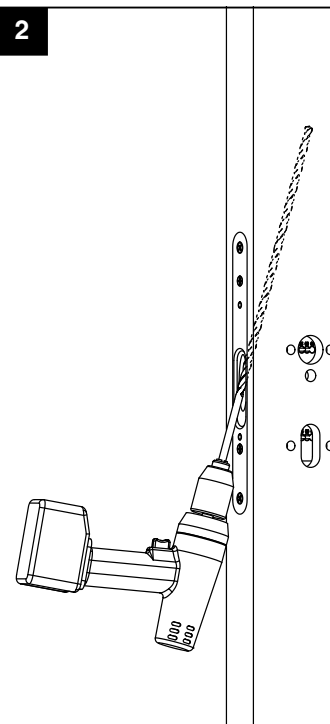


OUTSIDE

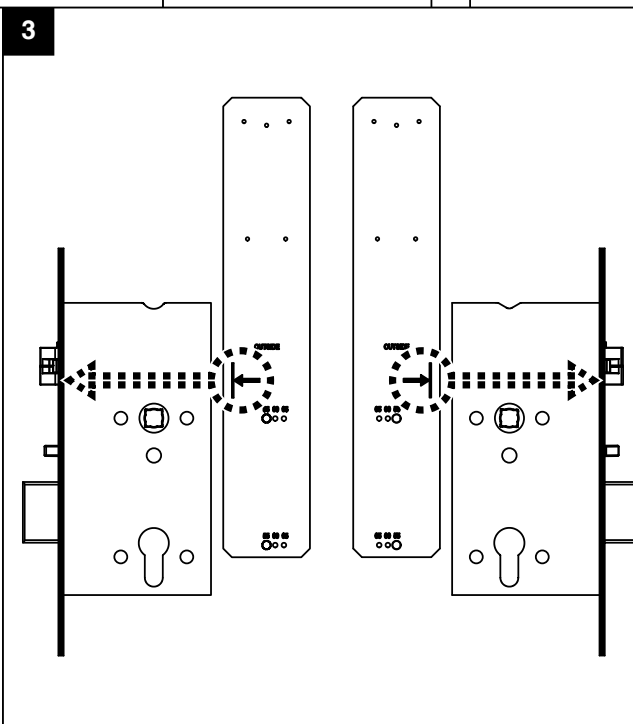


DRILLING

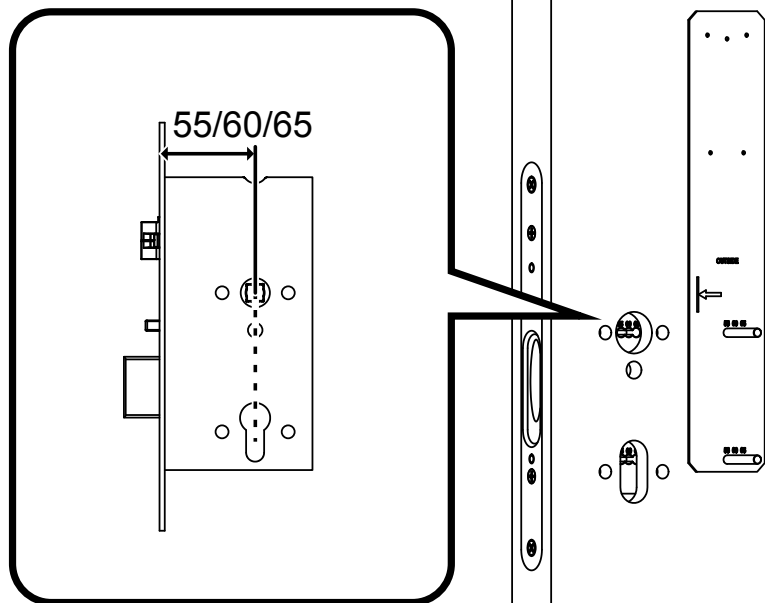
2



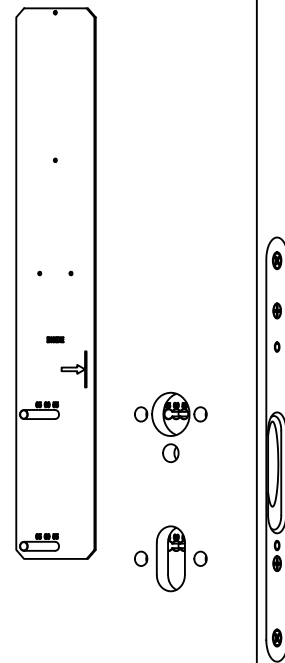
3



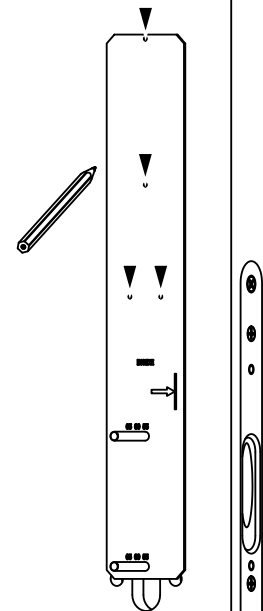
4



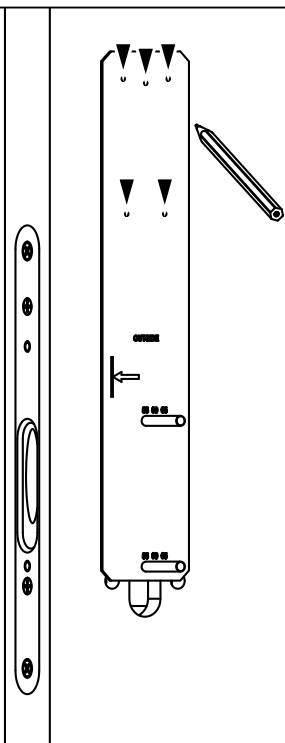
7



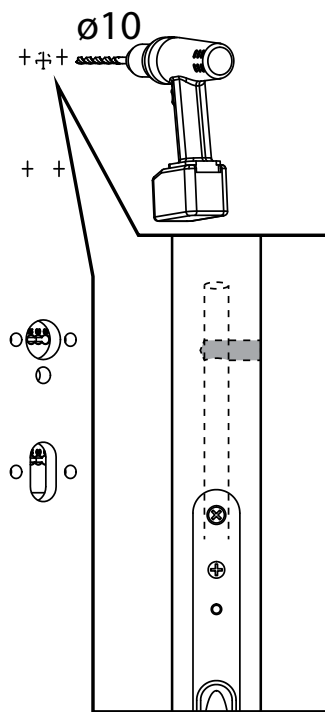
8



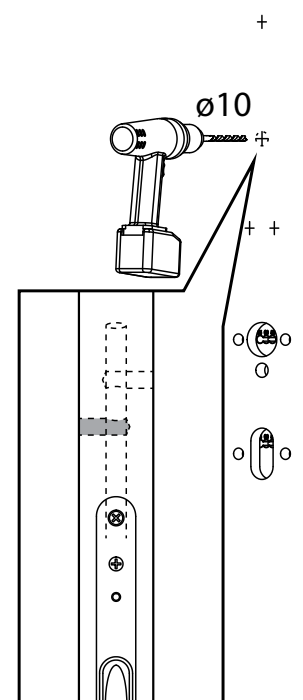
5



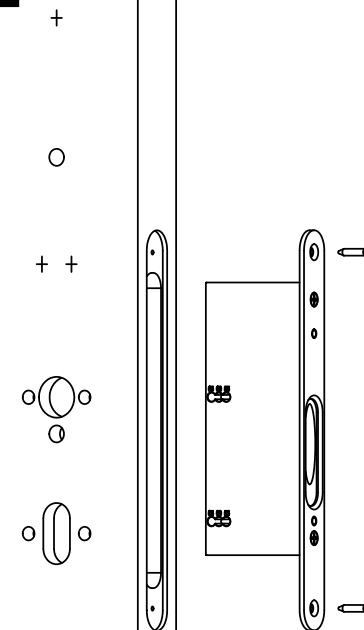
6



9

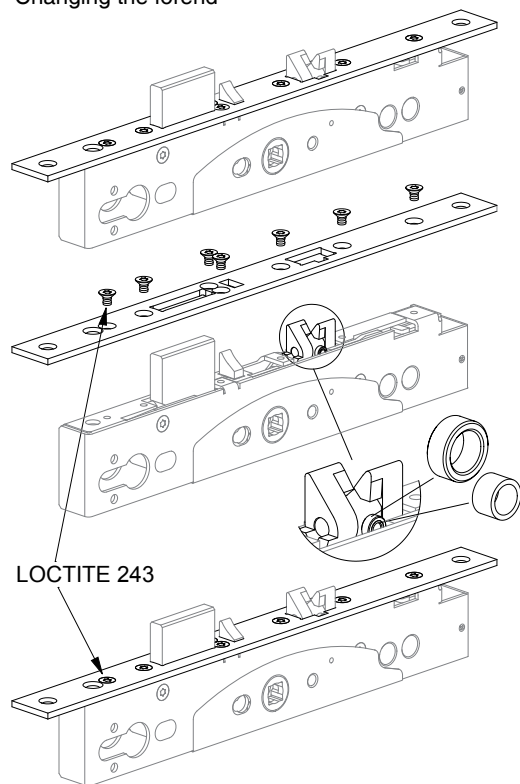


10

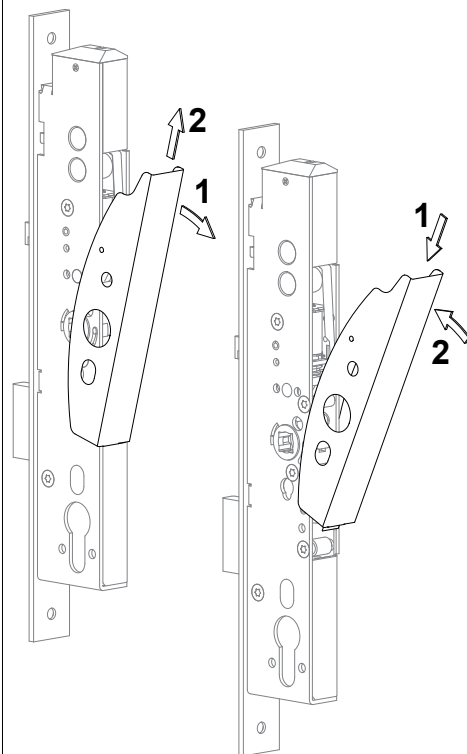


AL460

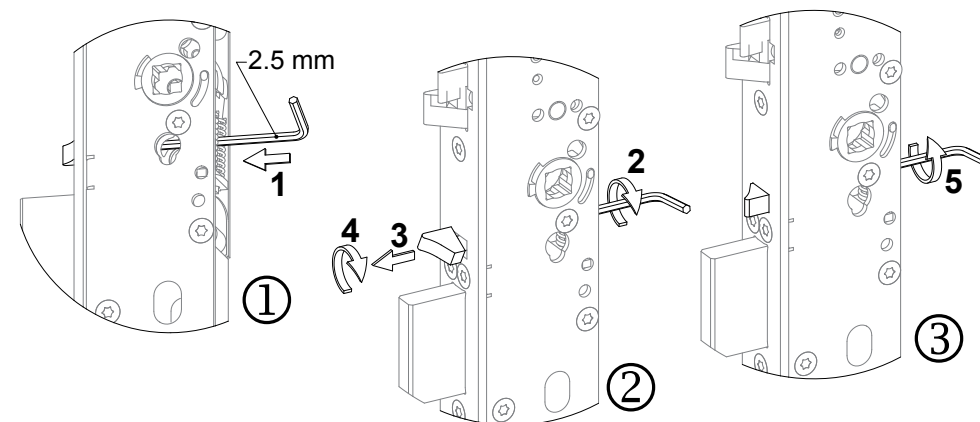
Changing the forend



Removing the manipulation protection cover

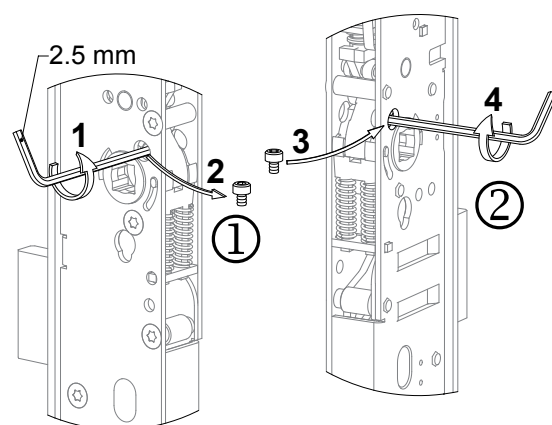


Changing the handing of the trigger bolt



Please note not to unscrew the Allen screw.

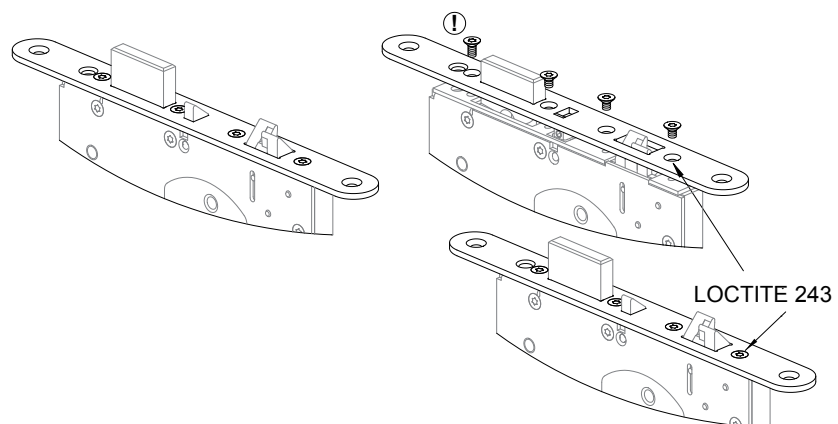
Setting the exit handle side



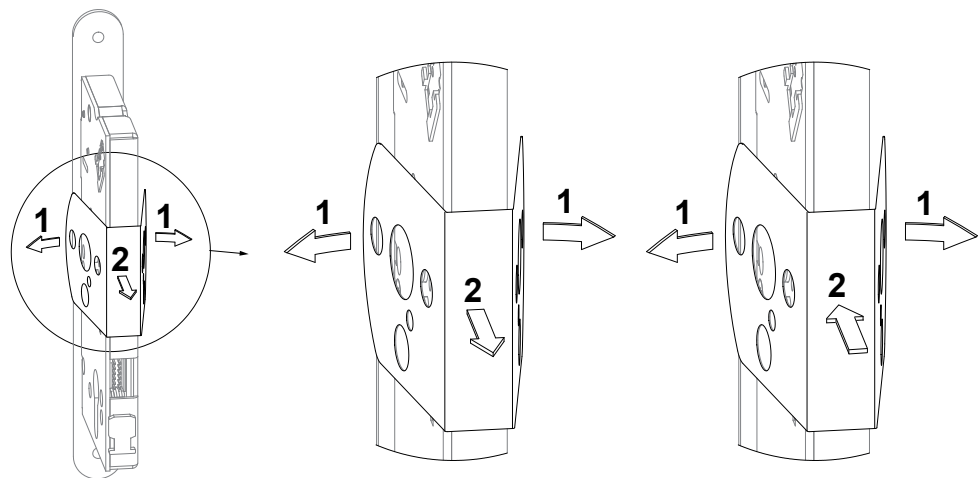
The handle, of the side where Allen screw is fixed, always opens the lock, while the handle of the other side is controlled electrically.

AL560

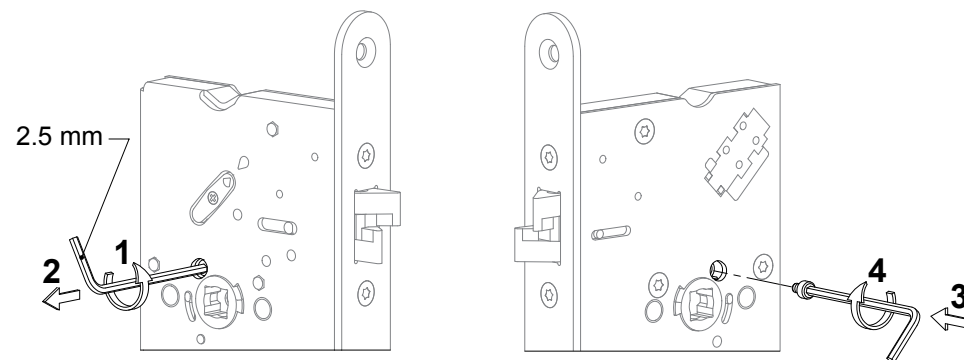
Changing the forend



Removing the manipulation protection cover

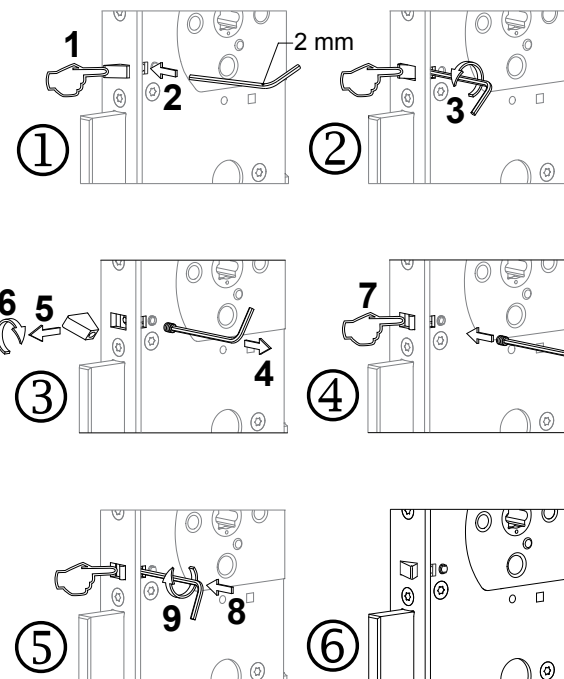


Setting the exit handle side

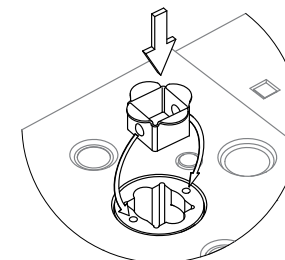


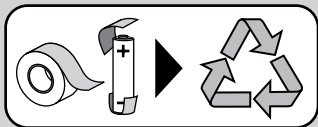
The handle, of which side the Allen screw is fixed, always opens the lock, while the handle of the other side is controlled electrically.

Changing the handing of the trigger bolt



Setting 8/9 snap spindle adapters





This product contains materials, such as electronics, which require specialist recycling techniques. When the product is taken out of use, disassemble it and sort and recycle the different materials as per valid recycling instructions.

ASSA ABLOY is the global leader in door opening solutions, dedicated to satisfying end-user needs for security, safety and convenience.

ASSA ABLOY

Abloy Oy
P.O.Box 108
80101 Joensuu
FINLAND
Tel.: +358-20 599 2501
Fax: +358-20 599 2209

www.assaabloy.com